



John Prince Siddon, "Sharks and Flowers", Acrylic on canvas, 120 x 120 cm.

## John Prince Siddon - *Hatching Time*

16.10.2020 - 21.11.2020



## John Prince Siddon – *Hatching Time*

---

16.10.2020 –  
21.11.2020

---

In collaboration with Mangkaja  
Art Resource Agency.

Hatching Time is John Princes second solo show in Melbourne and follows a highly successful solo exhibition early in 2020 at Fremantle Art Centre. Prince the son of Pompey Siddon, who was one of the founding painters at Mangkaja Arts Resource Agency in Fitzroy Crossing W.A in 1991. A Walmajarri man, he was born in 1964 in Derby, and spent his early years working on cattle stations until injured in a horse riding accident. Prince has been painting with Mangkaja since 2009. Princes artworks entice the viewer with an optical dynamism generated by colliding pattern design and imagery both traditional and contemporary, personal and popular.

“Just like I said, paintings bring memories back whatever young or old. When you start to paint, you’ll never stop! Many of our old people did most painting of their own on their own land, they love even the animals.

Well to me, I’m doing the same, trying to piece every animal whatever where they from; East, West, South, North- trying to paint them together. Like mix them up, just like a jigsaw. I paint animals who fight each other, hate each other, and sometimes love each other.

You know, back when I was young teen, I loved horse riding. But we were forced to work on cattle stations, as juveniles our punishment was to go to the stations and work. We used to steal back then- cars, booze, smokes, money, you name it.

Young or old, when you start you will never stop. These are my words; these paintings are my words. Landscape, dreamtime, stories, kids’ paintings, poetry.....put them all together, it’s all the same with all my painting it’s all mixed up.

I really don’t know how to translate it into words but I can by doing art. I’m a shy person, yea. Also, all my art stories are shy, yeah anyways, life goes on, whatever.”

– John Prince Siddon

Prince’s narrative captures what all artist strive for – a personal voice that intrigues. A personal language that connects to the universal. Johns is continually exploring many mediums and ways of working painted surfaces. Moving between 2D and 3D in medium and also in illusion. Prince depicts often confronting imagery inspired by national and global issues he watches on television, his own story and desert iconography and the Narrangkarni (Dreamtime).





John Prince Siddon

"All Mixed Up II"  
Cat 20-101,  
Acrylic on canvas,  
120 x 120 cm.  
\$7550



Chapman & Bailey Gallery  
350 Johnston Street,  
Abbotsford, VIC, 3067  
T +61 3 9415 8666  
gallery@chapmanbailey.com.au  
www.chapmanbailey.com.au





John Prince Siddon

"Sharks and Flowers"  
Cat 19-110  
Acrylic on canvas,  
90 x 60 cm  
\$3190



Chapman & Bailey Gallery  
350 Johnston Street,  
Abbotsford, VIC, 3067  
T +61 3 9415 8666  
gallery@chapmanbailey.com.au  
www.chapmanbailey.com.au





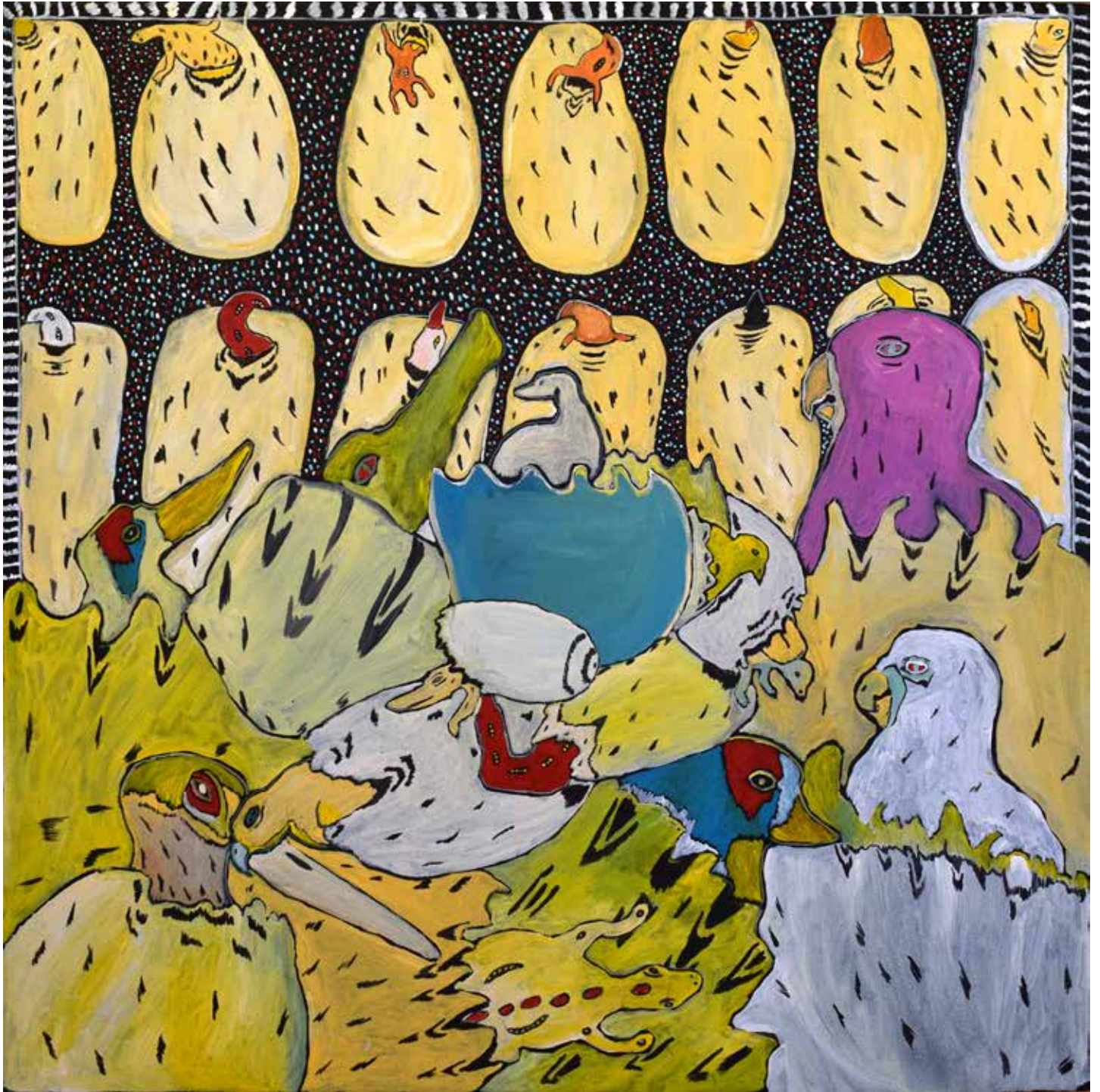
John Prince Siddon

"Purlkartu - Spider"  
Cat 20-116  
Acrylic on canvas,  
120 x 120 cm  
\$7550



Chapman & Bailey Gallery  
350 Johnston Street,  
Abbotsford, VIC, 3067  
T +61 3 9415 8666  
gallery@chapmanbailey.com.au  
www.chapmanbailey.com.au





---

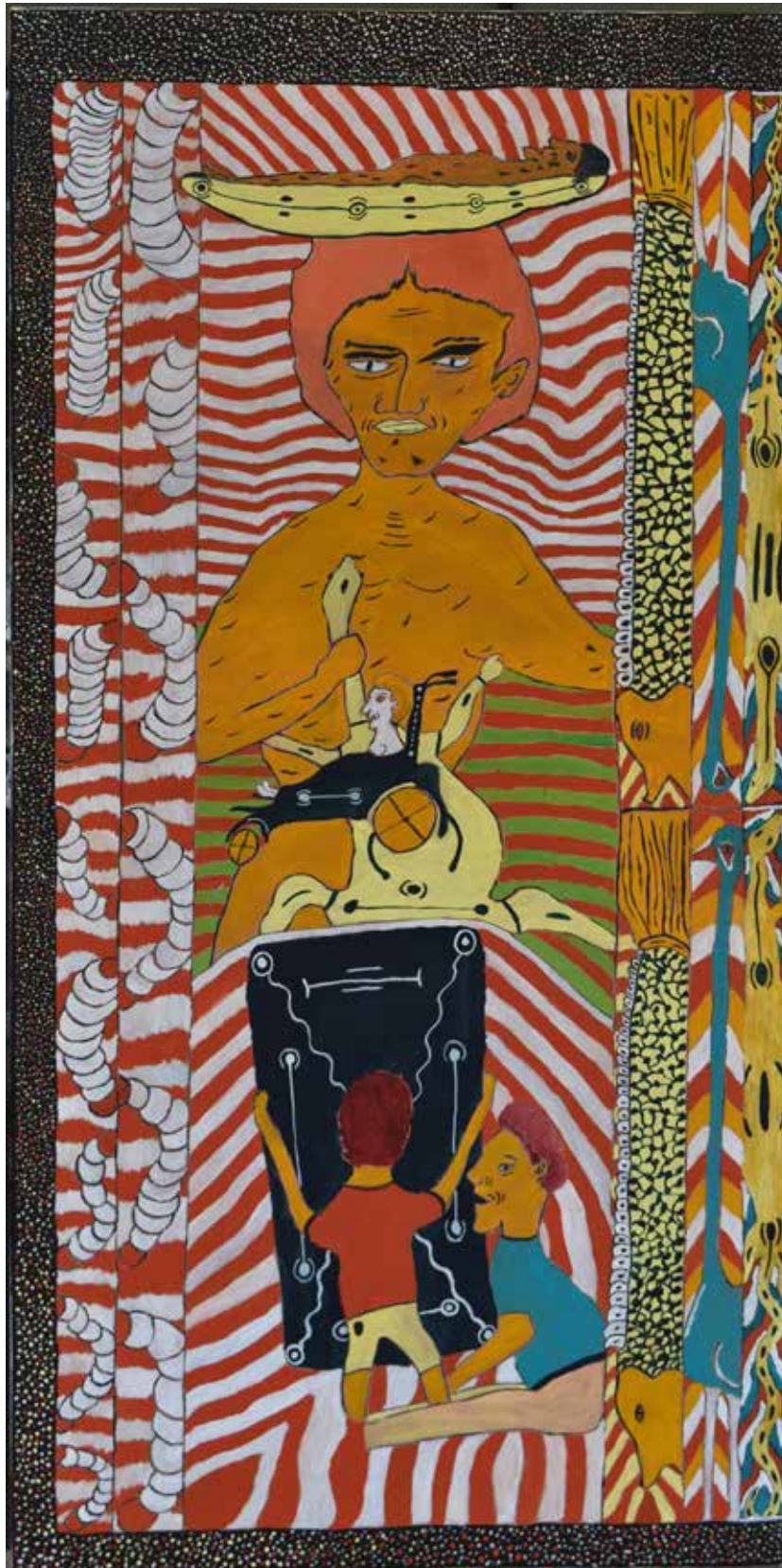
John Prince Siddon

"Hatching Time"  
Cat 20-102  
Acrylic on canvas,  
120 x 120 cm  
\$7550



Chapman & Bailey Gallery  
350 Johnston Street,  
Abbotsford, VIC, 3067  
T +61 3 9415 8666  
gallery@chapmanbailey.com.au  
www.chapmanbailey.com.au





John Prince Siddon

"Untitled"  
Cat 18-490  
Acrylic on canvas,  
180 x 120 cm  
\$10,420

Chapman & Bailey Gallery  
350 Johnston Street,  
Abbotsford, VIC, 3067  
T +61 3 9415 8666  
gallery@chapmanbailey.com.au  
www.chapmanbailey.com.au







John Prince Siddon

"Candle in the Wind"  
Cat 20-142  
Acrylic on canvas,  
120 x 120 cm  
\$7550



Chapman & Bailey Gallery  
350 Johnston Street,  
Abbotsford, VIC, 3067  
T +61 3 9415 8666  
gallery@chapmanbailey.com.au  
www.chapmanbailey.com.au





**John Prince Siddon**

---

"A Land Down Under"  
Cat 20-217,  
Acrylic on bullock skull,  
52h x 56w x 28d cm.  
\$3385



Chapman & Bailey Gallery  
350 Johnston Street,  
Abbotsford, VIC, 3067  
T +61 3 9415 8666  
gallery@chapmanbailey.com.au  
www.chapmanbailey.com.au





**John Prince Siddon**

---

"Bushfire",  
Cat 20-218,  
Acrylic on Kangaroo hide with hair,  
158h x 96w x .06d cm  
SOLD



Chapman & Bailey Gallery  
350 Johnston Street,  
Abbotsford, VIC, 3067

T +61 3 9415 8666  
gallery@chapmanbailey.com.au  
www.chapmanbailey.com.au